

Bertelsmann AI Curriculum – Are you ready to take your data skills to the next level?

With three new majors



Computer Vision



Natural Language Processing



Time-series Analysis

Machine Learning Engineer

You already have some prior experience in Data Science or Data Engineering? Take your skills to the next level and become an expert for Artificial Intelligence. Bertelsmann University offers you another premium-quality and flexibly configurable online learning experience-suited to your own learning needs and independent of time and location!

- // Embark on a learning path that suits your own learning needs
- // Build skills you can apply right away
- // Take the lead in one of the most vibrant fields of technology

Ready to take your data skills to the next level?

The AI curriculum complements the Bertelsmann Data Curriculum by one additional role profile:

Machine Learning Engineer

Grow your competencies as Machine Learning Engineer or choose from three majors dealing with specific areas of AI application:



Computer Vision



Natural Language Processing



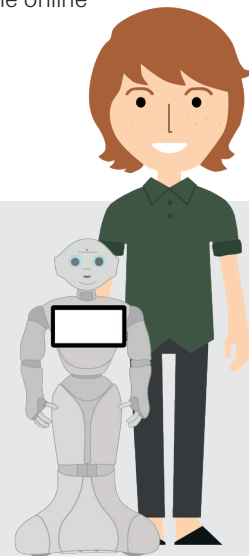
Time-series Analysis

All come with curated learning paths and various learning providers to choose from.

Premium partners, premium content

Bertelsmann University works with famously renowned partners that provide state-of-the-art content on the way to the AI learning objective you are aiming for.

- // Learn in a community of like-minded peers
- // Benefit from cutting-edge content created by top universities or leading experts in AI
- // Earn a sharable certificate upon successful completion of each course



More information: www.bertelsmann-university.com

coursera

UDACITY

